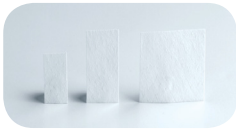


dental  
bone & tissue  
regeneration

botiss  
biomaterials

## Biomaterials For Professionals

hard & soft tissue



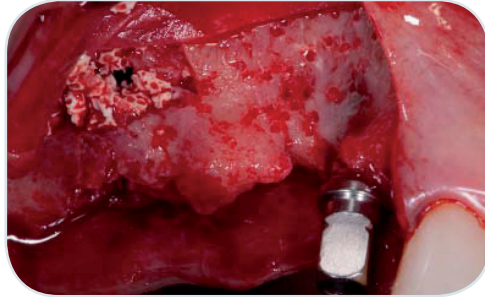
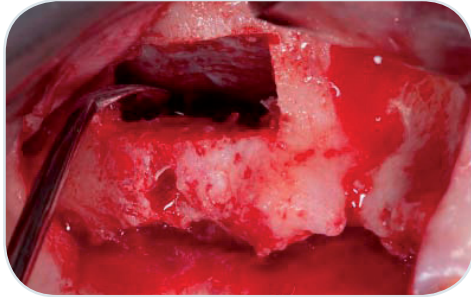
soft tissue

education

hard tissue

cerabone®

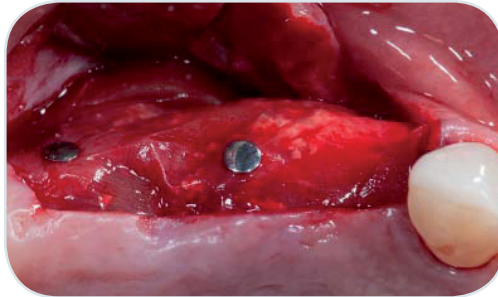
## Natural Bovine Bone Grafting Material



Dr. Krzysztof Chmielewski  
Gdansk / Poland

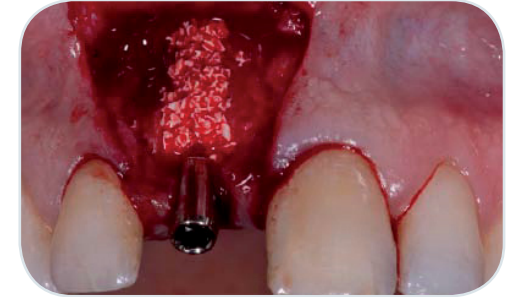
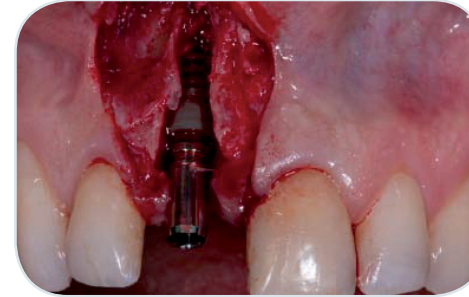
### cerabone® Properties & Advantages

- Slow resorption and fast integration by new bone formation
- Long-term three-dimensional graft stability
- Osteoconductive, hydrophilic surface, optimal cell adhesion and blood absorption
- Easy handling



collprotect membrane®

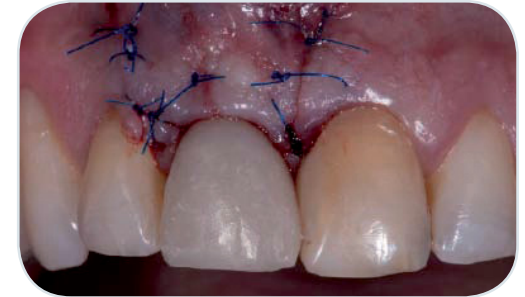
## Natural Collagen Membrane



Dr. Bernd Giesenhausen  
Frankfurt / Germany

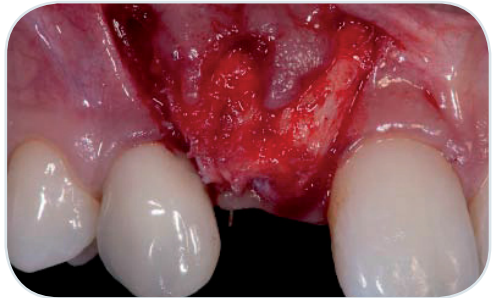
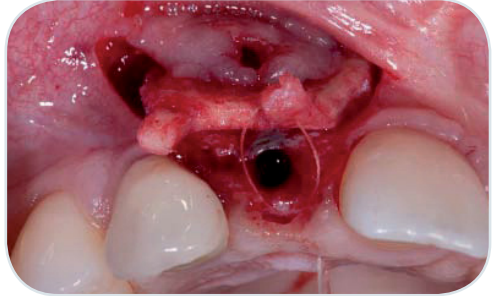
### collprotect membrane® Properties & Advantages

- Natural collagen matrix
- Medium-term barrier function in GBR/GTR procedures
- Easy application and handling wet or dry
- Rough and porous structure for cell guidance
- Resorption time approx. 8 to 12 weeks



mucoderm®

## 3D-Regenerative Tissue Graft



Dr. med. dent. Orcan Yüksel  
Frankfurt / Germany

### mucoderm® Properties & Advantages

- 100% natural collagen matrix
- Rapid vascularization and integration
- Soft tissue replacement without palatal autograft harvesting
- Complete remodelling into patients own tissue
- Resorption time 6 -12 months



botiss uk limited

Literature, studies, clinical cases and orders:  
order@botiss-uk.com

Mobile: +44 7827 667 022 Phone: +44 2030 788 834

[www.botiss-uk.com](http://www.botiss-uk.com)